



# SOLARA



GLEN WAVERLEY RESIDENCES  
251 SPRINGVALE ROAD GLEN WAVERLEY

**INTRODUCING SOLARA**

04

Welcome to Solara – your place to experience the very best of vibrant Glen Waverley with everything you need.

**ARCHITECTURE**

06–11

Solara is a new Glen Waverley landmark, designed by award-winning Plus Studio to inspire from every angle.

**SOLARA COMMUNAL SPACES**

12–21

Extra spaces and additional facilities you'll appreciate daily, including a stunning rooftop lounge just for residents.

# The world on your doorstep.

# From sunrise to sunset.

**RESIDENCES**

22 – 35

Your thoughtfully designed home has everything considered, from the private balcony to the personal storage.

**GLEN WAVERLEY**

36–47

Solara is perfectly positioned at the heart of Glen Waverley, within walking distance of the very best of this popular area.

**THE TEAM**

48–51

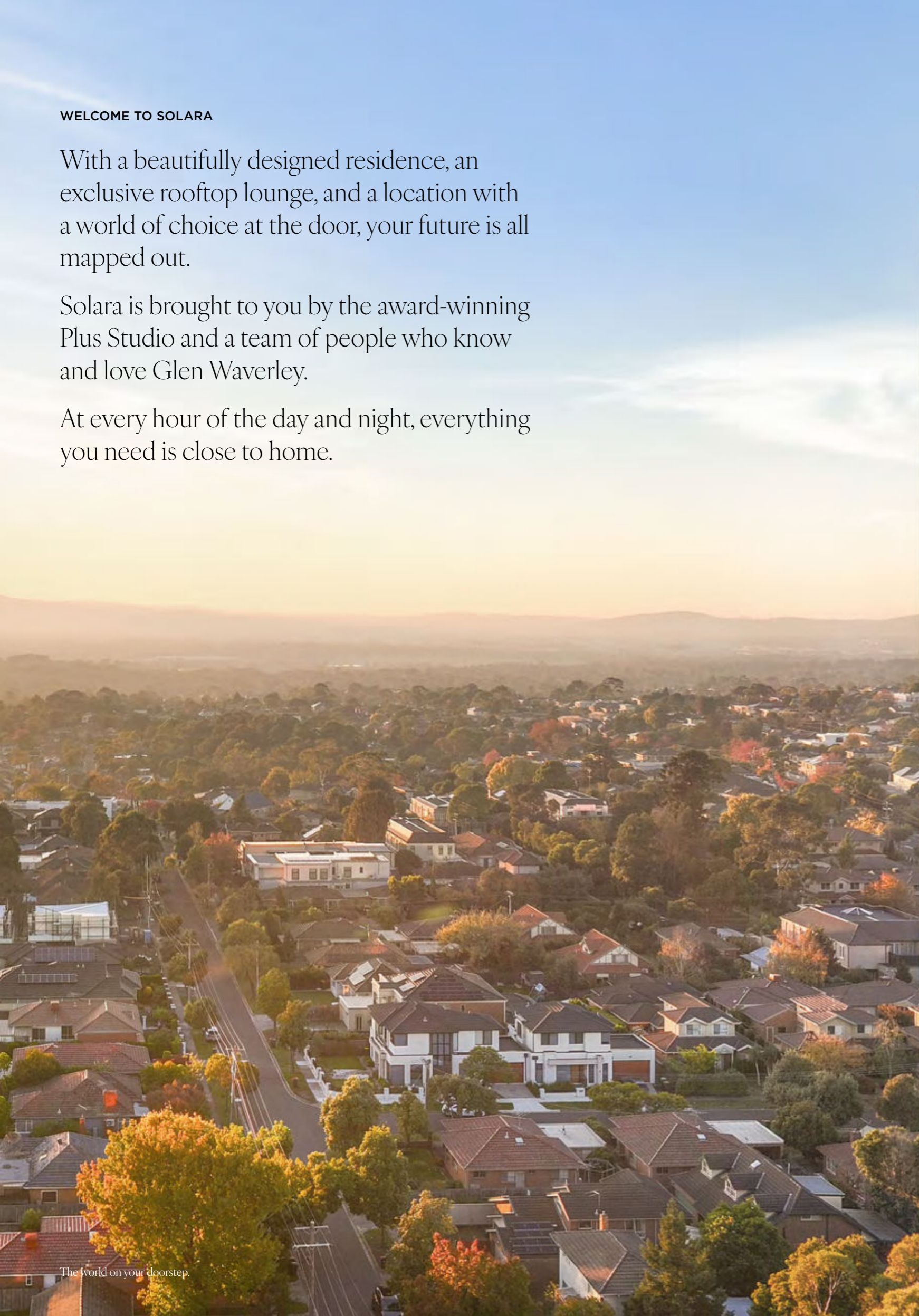
A collaboration between people with a world of property experience and a shared appreciation of Glen Waverley.

WELCOME TO SOLARA

With a beautifully designed residence, an exclusive rooftop lounge, and a location with a world of choice at the door, your future is all mapped out.

Solara is brought to you by the award-winning Plus Studio and a team of people who know and love Glen Waverley.

At every hour of the day and night, everything you need is close to home.





SOLARA FACADE

From sunrise to sunset.

## ARCHITECTURE

A new Glen Waverley landmark designed by award winning Plus Studio.

Slender and sophisticated, the architecture of Solara makes a refined addition to the Glen Waverley skyline. From its quartet of gleaming sections in the tower to the textural brickwork of its lower podium levels, the building embodies the character of this suburb: welcoming, safe, full of energy, and a place of pride.

Beyond the inspiring design, the architecture delivers several practical advantages for residents. Balconies have been strategically placed to maximise views and privacy; every residence has been designed to draw sunlight deep within living spaces; and the rooftop level has been used to create an indoor-outdoor luxury communal lounge.



SOLARA AT STREET LEVEL

**EXPLORE A NEW SIDE OF GLEN WAVERLEY**

Solara makes a distinguished addition to the local landscape. Beyond the crafted and curved brickwork of its walls and the greenery cascading from above, the ground floor includes spaces for retail or dining destinations, making the building a natural, integrated part of the neighbourhood.

RCSI  
Explore 6:30<sup>PM</sup>  
Travel



ENTRANCE LOBBY

Curved forms, beautiful leather couches and a sculptural light feature draw residents and guests within the entrance lobby, creating a memorable first impression.



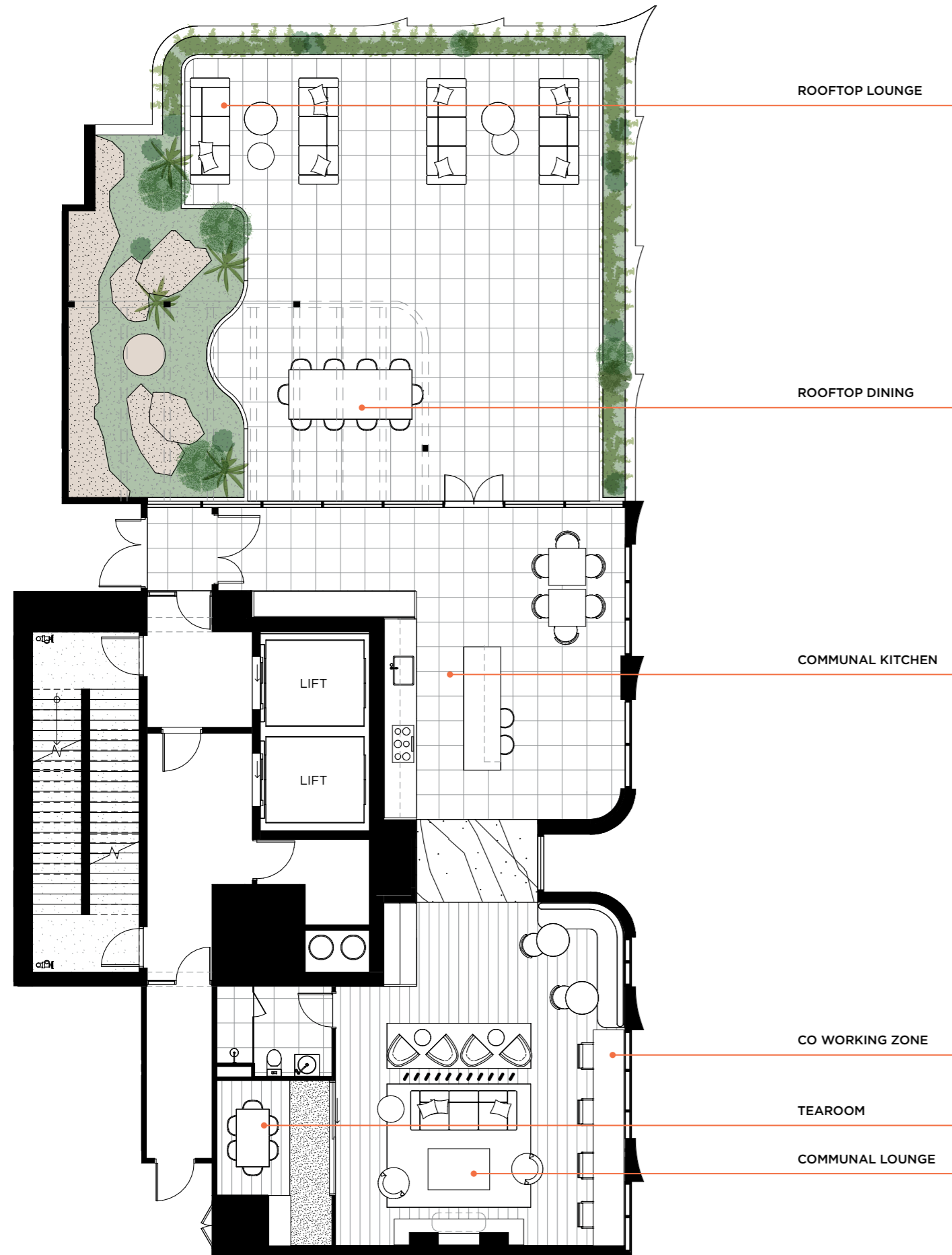
## COMMUNAL SPACES

Private spaces, elegant design and sweeping views: the exclusive rooftop lounge takes residential amenities to a new height.

The top floor of Solara provides a range of inspiring settings where you can enjoy time alone or with neighbours and guests. Whether curled up with a book by the cosy fireside setting, playing a game of mahjong, finding focus in the co-working space, or hosting a meal around the outdoor dining area with a panoramic backdrop, every element has been designed to elevate daily life.

## SOLARA ROOFTOP AMENITY

Plus Studio has designed the rooftop lounge to enjoy the surrounding sweeping views. Gather your family for a feast around the outdoor dining table, with the convenience of a barbecue and a communal kitchen. The rooftop also includes a lounge & Tea Room for relaxing and places for co-working in peace and quiet.



## Extra services to make life easy

Those extra touches that make daily life more enjoyable? They're part of the experience at Solara, from keeping your car – and your dog – looking its best, to a range of facilities all controlled from a simple and smart app.



### CAR WASH

Save time and money with the convenience of an onsite car wash, available just for residents in the basement.



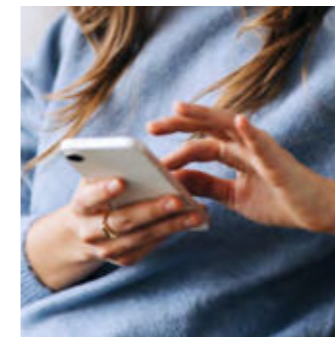
### DOG WASH BAY

When you return from the park with your furry four-legged friend, a dog wash bay ensures they (and your home) are kept clean.



### EV CHARGER

With more and more people enjoying the benefits of electric vehicles, Solara has the provision for charging facilities.



### BUILDING APP

Easy communication between neighbours and building management is at the touch of a button with one handy app.



### PRIVACY AND SECURITY

Security access lock (smart lock) is convenient and reassuring.



### BIKE STORAGE & REPAIR STATION

Make sure your bike is at its best before you pedal out. A handy bike repair station has everything you need.



### PARCEL LOCKERS & COOL ROOM

Live a convenient life, with your parcels and groceries delivered and waiting for you in designated areas of the Solara lobby.





ROOFTOP COMMUNAL KITCHEN

EXPLORE  
Entertain 2:30 PM  
Palace

**ENTERTAIN ON A NEW LEVEL**

What better place to host a family gathering than the rooftop lounge of Solara, with outdoor dining surrounded by spectacular views all the way to the Dandenong Ranges, and a fully-equipped kitchen to make catering easy. The perfect venue for birthdays, cocktail parties, and special events is just upstairs.



ROOFTOP TERRACE AND DINING

The world on your doorstep.



## RESIDENCES

Your home is your domain, with everything you need for modern living.

From the warmth of sunlight streaming into your living space to the touch of finely crafted surfaces under your fingers, every element of the spacious interiors has been considered to deliver a practical and refined living experience.



LIVING

**RELAX WITH ALL THE COMFORTS OF HOME**

Living spaces feature wide engineered European oak flooring, perfectly complementing the neutral tones of the walls and ceiling. Your private balcony extends this living space outside, providing the ideal place to soak in the sun as well as views out over the treetops.

VIEW  
Relax  
Gather

6:30<sup>PM</sup>

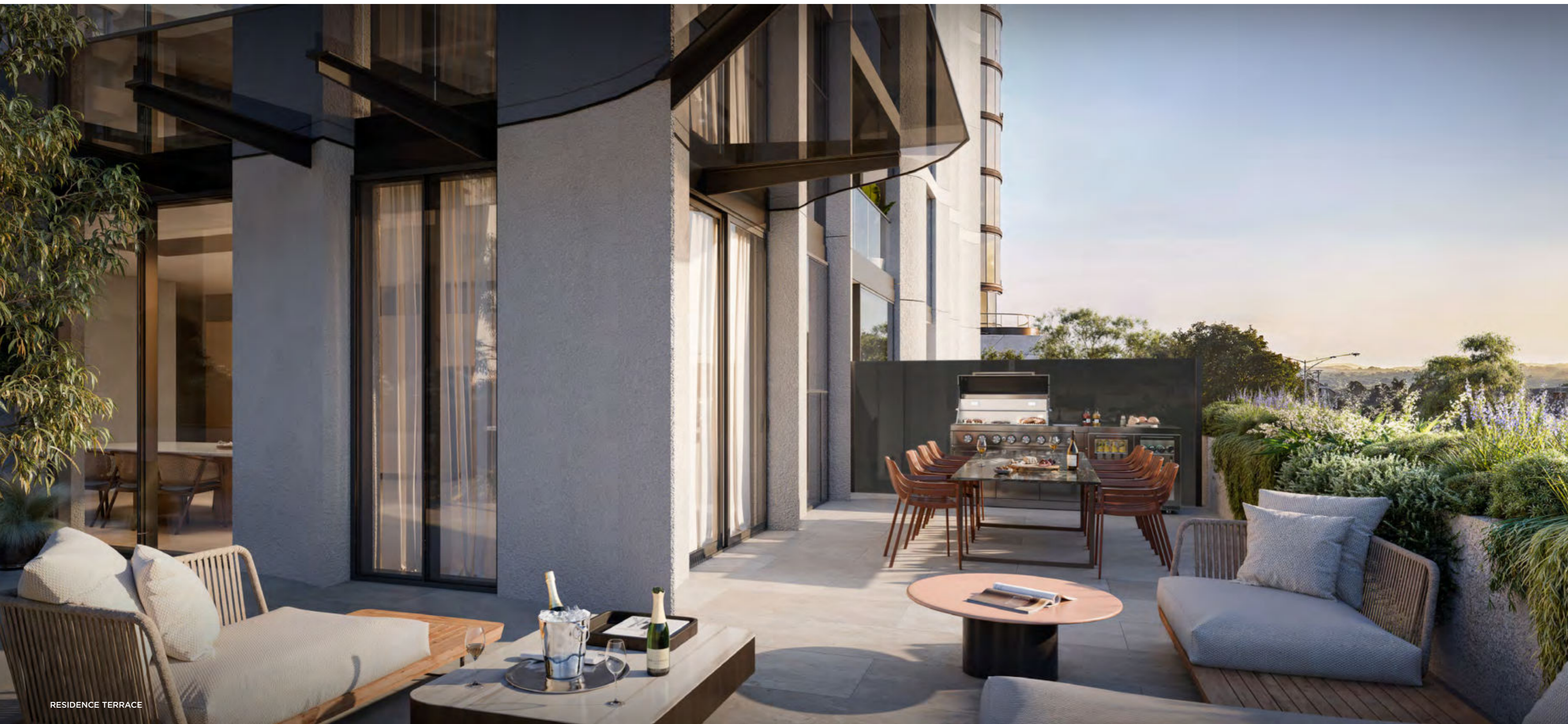


KITCHEN — LIGHT COLOUR SCHEME

**YOUR CONTEMPORARY KITCHEN**

Your kitchen has been designed to balance beautiful forms with practical functionality. Natural stone benchtops, splashbacks, and overhead joinery frame your preparation space, complete with a black ceramic cooktop and oven, an integrated dishwasher, a French door refrigerator, and contemporary matte black tapware.

NEIAx  
Gather  
Rest 2:30 PM



RESIDENCE TERRACE

**EXPAND YOUR HORIZON**

Select residences enjoy terraces with additional space featuring room for outdoor lounges, a dining setting for eight people and a barbecue, all fringed by lush greenery.



MASTERSUITE — LIGHT COLOUR SCHEME

Gather  
Rest  
Wake

9:45<sup>AM</sup> PM

**REST IN YOUR MASTER SUITE**

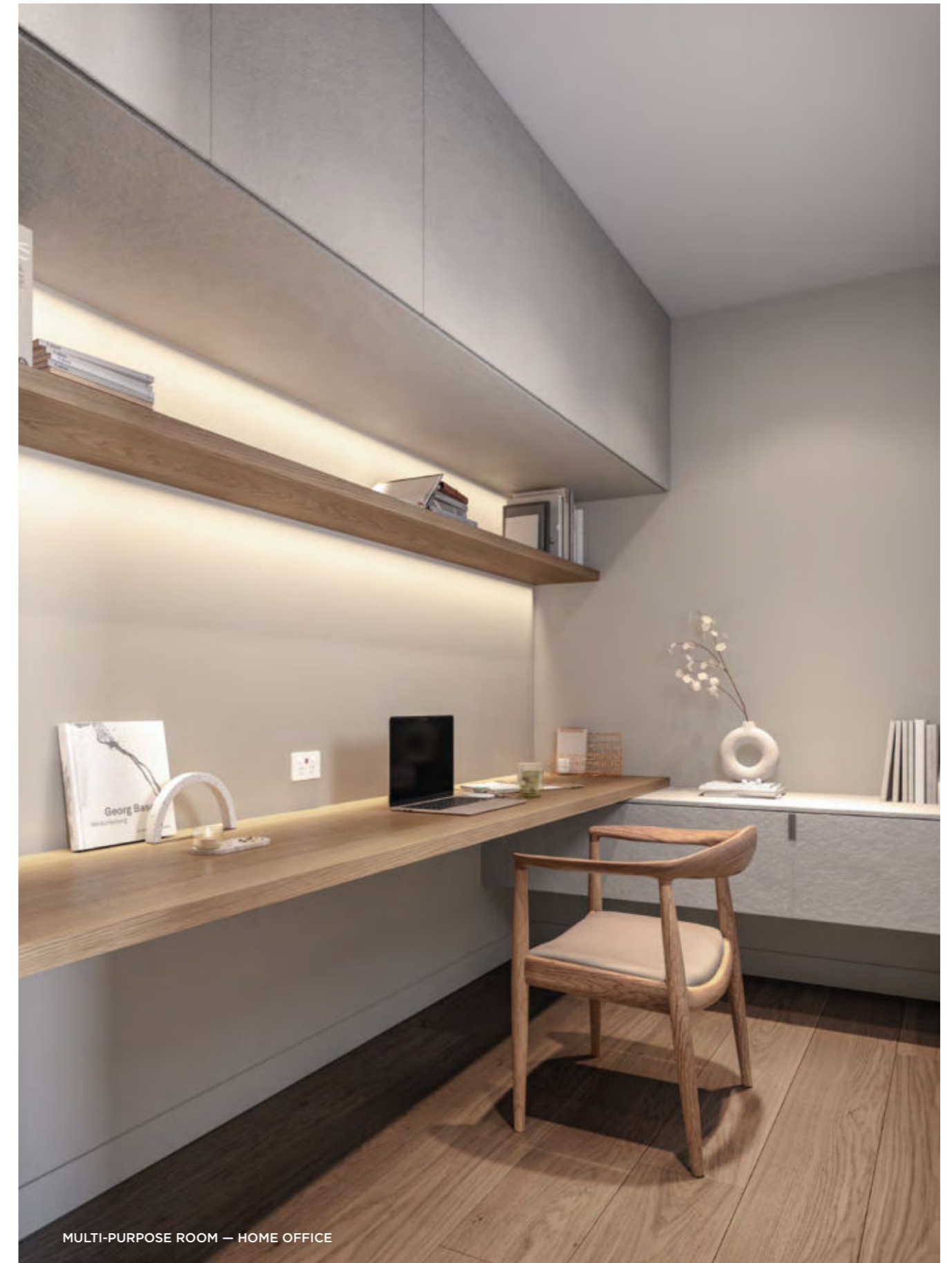
Your bedroom at Solara is your sanctuary, softened by plush sage-green carpeting and featuring elegant built-in wardrobes.



MULTI-PURPOSE ROOM — NURSERY

More choices for your home. The multi-purpose room, designed with versatility in mind, adapts to your life.

A serene haven, perfectly proportioned for your most treasured early moments



MULTI-PURPOSE ROOM — HOME OFFICE

A refined workspace where focus and inspiration meet in equal measure



**BATHROOM — LIGHT COLOUR SCHEME**

Ceramic tiling and a beautifully crafted terrazzo-like vanity give the bathrooms an understated yet contemporary feel.



**BATHROOM — DARK COLOUR SCHEME**

Each bathroom is generous in scale, refined in design and easy to maintain, with practical considerations from storage to lighting.



MONASH CITY COUNCIL

CENTURY CITY SHOPPING CENTRE

GLEN WAVERLEY STATION

GLEN WAVERLEY SECONDARY COLLEGE

WESLEY COLLEGE

VILLAGE CINEMAS  
NOVOTEL HOTEL  
STRIKE BOWLING  
SEOUL GARDEN

DAVID JONES TARGET  
WOOLWORTHS ALDI  
COLES UNIQLO  
TK MAXX H&M

THE GLEN SHOPPING CENTRE

GLEN WAVERLEY PRIMARY SCHOOL

SOLARA

PORT PHILLIP BAY

MELBOURNE CBD

SPRINGVALE ROAD

HIGH STREET

### LOCATION

Glen Waverley is sometimes referred to as the ‘centre of the universe,’ for those lucky enough to live here with the world at their doorstep, it’s easy to see why.

At every hour, from day to night, this pocket of Melbourne’s leafy eastern suburbs provides its residents with everything they need, from popular shopping and dining choices to the convenience of public transport, green parklands and prestigious schools.

Solara is perfectly positioned in one of the city’s very best locations. Living here, you’re surrounded by both bustling village life and peaceful green parklands, with direct connections to the centre of Melbourne conveniently close by train or the nearby Monash Freeway. And soon to be connect via the suburban rail loop.



# SOLARA

FUTURE SUBURBAN RAIL LINK

7kms

BURWOOD HWY

3kms

CBD 16mins

MONASH FWY

HIGH ST RD

WAVERLEY RD

CHADSTONE SHOPPING CENTRE

MONASH AQUATIC & RECREATION CENTRE

VICTORIAN POLICE ACADEMY

CALoola RESERVE

SCOTCHMANS RUN RESERVE

FERNTREE GULLY RD

MONASH SRL STATION

PRINCES HWY

MONASH UNIVERSITY

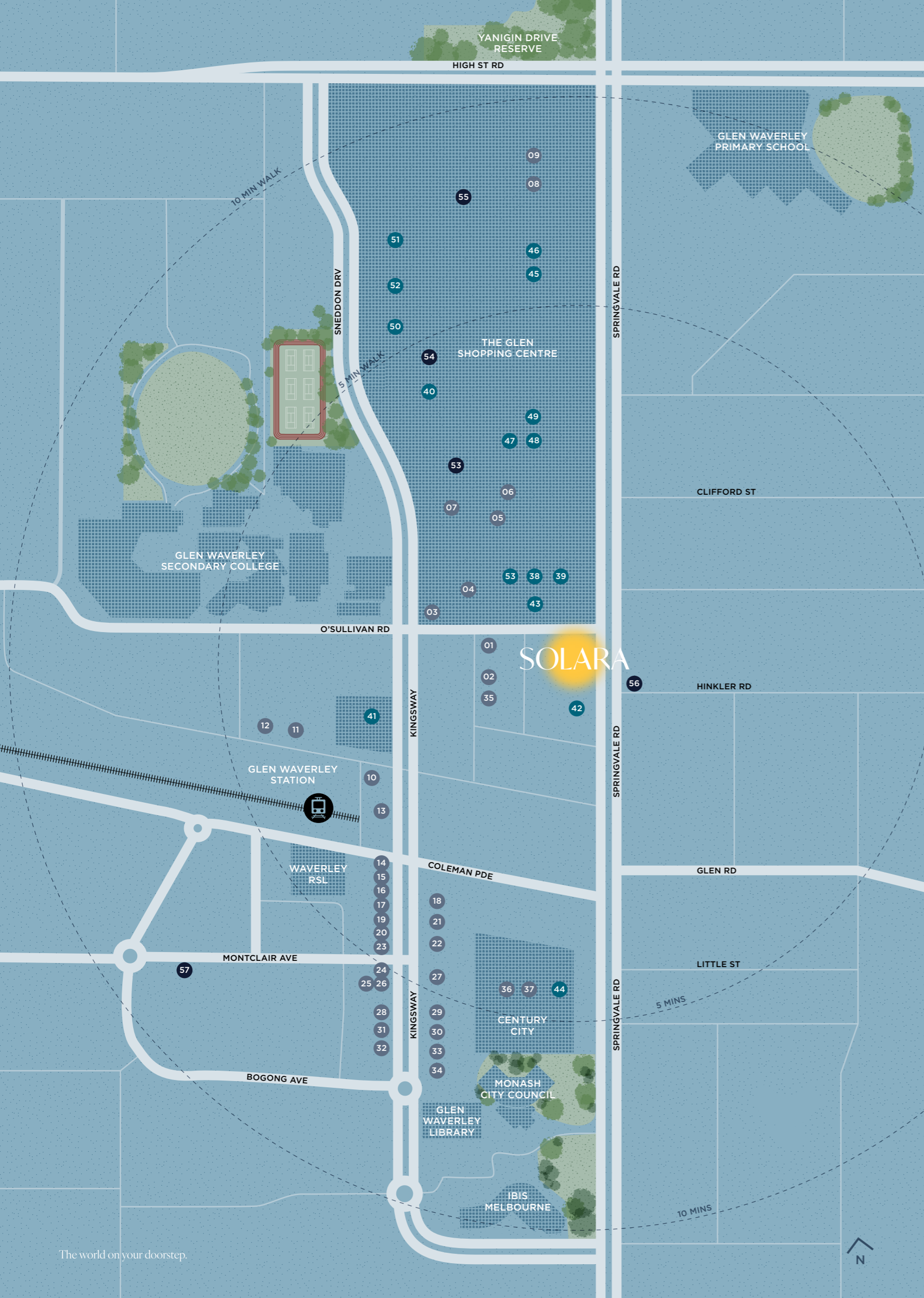
NORTH RD

HUNTINGDALE GOLF CLUB

CLAYTON SRL STATION

WAVERLEY PARK

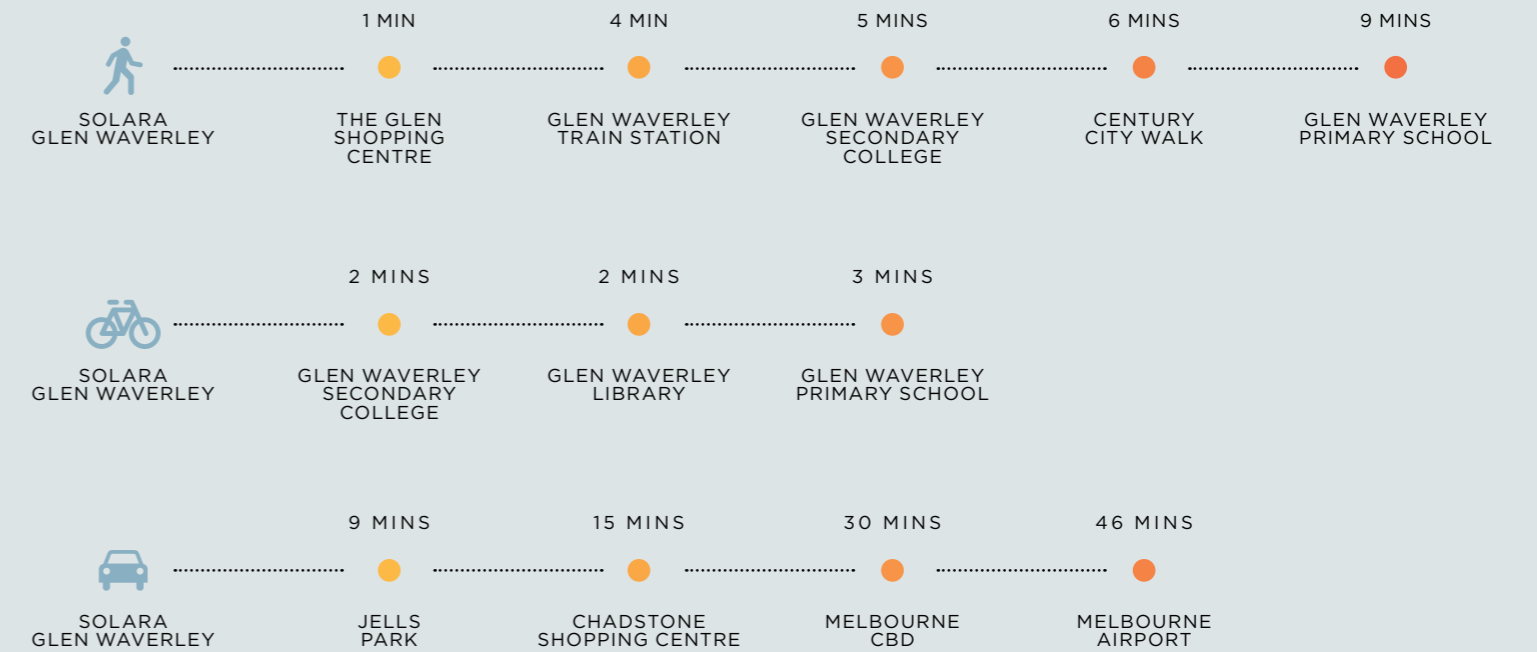




Leave the car at home. Living here, you're moments from The Glen and in walking distance of everything.

Whether going shopping, meeting friends for dinner, taking the children to school or catching a train to the city, Solara places you within easy walking distance of everything. By bike or by car, the wider neighbourhood and greater city of Melbourne are also easily reached.

Walk Score **92** A Walkers Paradise!



**RESTAURANTS & CAFES**

- 01 The Boiling Crab
- 02 Meet Fresh
- 03 Scusa Mi Italiano
- 04 Shanghai Red
- 05 Wagyu Ya Teppanyaki
- 06 Haidilao Hotpot
- 07 Miss Pings Thai
- 08 Master Lanzhou
- 09 Omi The Glen
- 10 Black Flat Coffee Brewers
- 11 Yoon's Kitchen
- 12 Nan Yang Kopitiam
- 13 The Laksa King
- 14 Sharetea
- 15 Yong Glen Waverley
- 16 Ocean King Chinese Restaurant
- 17 Hong Kong Dim Sum
- 18 China Bar

- 19 The Black Toro
- 20 Sanaicho Buffet
- 21 Wonton House
- 22 Eastwood Chinese
- 23 Mocha Jo's
- 24 Grill'd
- 25 Bon Chicken & Beer
- 26 Waya Japanese
- 27 Piatella Cafe Bar
- 28 Rock Kung
- 29 Dodee Paidang
- 30 The Grand Tofu
- 31 Le Charme Glen
- 32 Noodle Villa
- 33 Dumpling Empire
- 34 Dragon Hot Pot
- 35 Marble Yakiniku
- 36 Meze
- 37 Century City Tavern

**RETAIL / RECREATION**

- 38 David Jones
- 39 Woolworths
- 40 Coles
- 41 Dan Muphy's
- 42 Chemist Warehouse
- 43 Anytime Fitness
- 44 Village Cinemas Century City
- 45 Endota Spa
- 46 Flight Centre
- 47 Koko Black
- 48 L'occitane
- 49 Mecca
- 50 H&M
- 51 Tk Max
- 52 Target
- 53 Emier

**MEDICAL/ESSENTIAL SERVICES**

- 54 Glen Waverly General Practice
- 55 The Glen Superclinic
- 56 Waverly Medical Centre
- 57 Kingsway Medical

Beyond expectations – there are parks, pools and plenty of ways to stay active or reconnect with nature close to home.

Recreation options abound in the area surrounding Solara, from the green expanses of Jells Park to neighbourhood parks, walking trails and sporting facilities. For gentle stretching, working up a sweat or picnicking in a park, the great outdoors are never far away.



**BREATHE EASY WITH TAI CHI IN JELLS PARK**

The perfect start to your day. Jells Park features nine kilometres of pathways to explore and more than 100 hectares of open space to enjoy.

Wake  
Breathe  
Golf 6:45 AM



**RIVERSDALE GOLF CLUB - 10 MIN Driving**

One of Melbourne's oldest golf clubs is also one of its most beautiful, with a mix of greens and a clubhouse for members.



**MONASH AQUATIC CENTRE - 6 MIN DRIVE**

As well as indoor and outdoor heated pools, you'll find a gym, group fitness classes, sauna facilities and much more.



**BOGONG RESERVE - 15 MIN WALK**

Your local neighbourhood park includes bushland and wetland areas, a playground and an off-leash dog area.



DIY  
Golf 7:15 AM  
Learn

**GOLF BETWEEN GENERATIONS:  
FATHER AND SON AT RIVERSDALE GOLF CLUB**



GO! Learn Shop

8:45<sup>AM</sup>

TUESDAY MORNING SCHOOL DROP OFF AT GLEN WAVERLEY SECONDARY COLLEGE



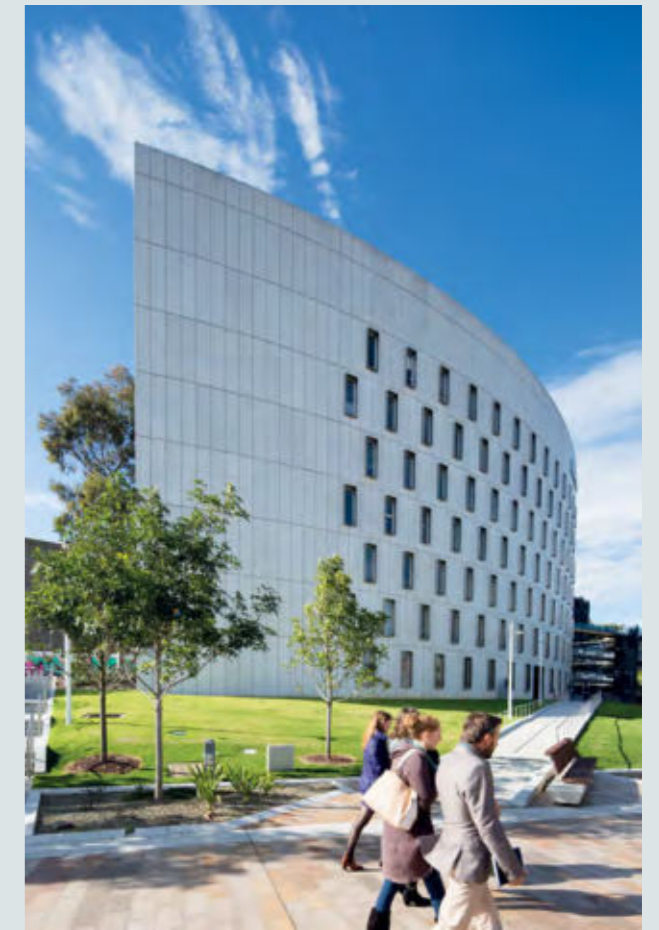
**GLEN WAVERLEY SECONDARY COLLEGE — 5 MIN WALK**

Glen Waverley Secondary College is not only one of Victoria's largest schools but also one of the most high-performing.



**WESLEY COLLEGE — 5 MIN BIKE RIDE**

The Glen Waverley campus of Wesley College, one of Melbourne's leading private schools for students from early childhood through to VCE.



**DEAKIN UNIVERSITY — 10 MIN DRIVE**

Deakin University's Burwood campus offers courses in nursing, engineering, IT, health sciences and more in cutting-edge learning facilities.

Learning at every level, from primary school to university, is easier with some of the city's best education nearby.

**SCHOOLS & EDUCATION**

Living at Solara places many public and private schools close to home, with the campuses of prestigious universities just a short drive away. You will also find preschool centres and tutoring services nearby, making life easier for parents who want to give their children the best start.

Shopping, dining and entertainment options are only moments from home

**RETAIL & ENTERTAINMENT**

The Glen is a major shopping centre home to David Jones, Target, ALDI, Coles and Woolworths, a fresh food market hall, over 200 specialty stores, and a lively outdoor dining precinct. You'll find everything under one roof, from high-end brands to daily essentials.



**MARBLE YAKINIKU - 2 MINUTE WALK**

Marble Yakiniku is just one of the suburb's top-rated places to find authentic cooking. Here, the Japanese cuisine is prepared with locally sourced wagyu cuts and barbecued at your table.

FRIDAY FAMILY DINNER  
AT MARBLE YAKINIKU

Shop  
Dine  
Dust  
8:25 PM



Shop  
Dine  
2:15 PM

AN AFTERNOON SHOPPING  
AT THE GLEN SHOPPING CENTRE



**CENTURY CITY — 5 MIN WALK**

Century City is the place to catch the latest movies on the big screen at Village Cinemas, have fun with the family at Strike Bowling, or enjoy a range of delicious dining options.

Quick bites, healthy meals and special event dinners are all on the menu in Glen Waverley.

**RESTAURANTS & CAFES**

Glen Waverley is renowned for its excellent food culture. From The Glen and Century City to the streets surrounding Solara, you won't have to go far to find authentic dinner options, including popular Chinese, Italian, Middle Eastern, French, Thai and Korean restaurants, as well as casual daytime destinations and cafés for catching up with friends over coffee.



JELLS PARK AT SUNSET

The world on your doorstep.

## TEAM

Solara brings together industry experts with a world of experience to deliver Glen Waverley's newest landmark residences.

Having previously delivered the neighbouring address Galleria, the team is proud to contribute again to a part of Melbourne close to their hearts.

The team behind Solara represent some of Melbourne's most trusted names in property, and have a history of working together to deliver exceptional residences exactly as promised.

## Nan Xin

### DEVELOPER

Nan Xin is a seasoned developer with over 15 years experience delivering quality industrial and residential projects across Australia. Best known locally for Galleria Glen Waverley — a landmark residential success that nearly sold out in its first weekend — Nan Xin has quickly earned a reputation for thoughtful design, quality finishes, and enduring value. With a deep appreciation for architecture that enhances the local fabric, Nan Xin approaches each new project as an opportunity to elevate the standard of living for its residents.

## Plus Studio

### ARCHITECTURE & INTERIOR DESIGN

Plus Studio are designers for the built environment—delivering solutions that are equal parts big picture and small details.

They thrive in the often uncomfortable space between vision and viability. Drawing on 27 years of expertise, they understand how to push the limits of creativity without breaking them. With 11 studios across Australia and New Zealand, they have the capability too. Realises beauty in everything from city-shaping infrastructure to life-changing abodes. Ensuring big ideas dreamt up in the dark of night stack up in the light of day.

Plus Studio. Where creativity meets precision.

## Deloitte

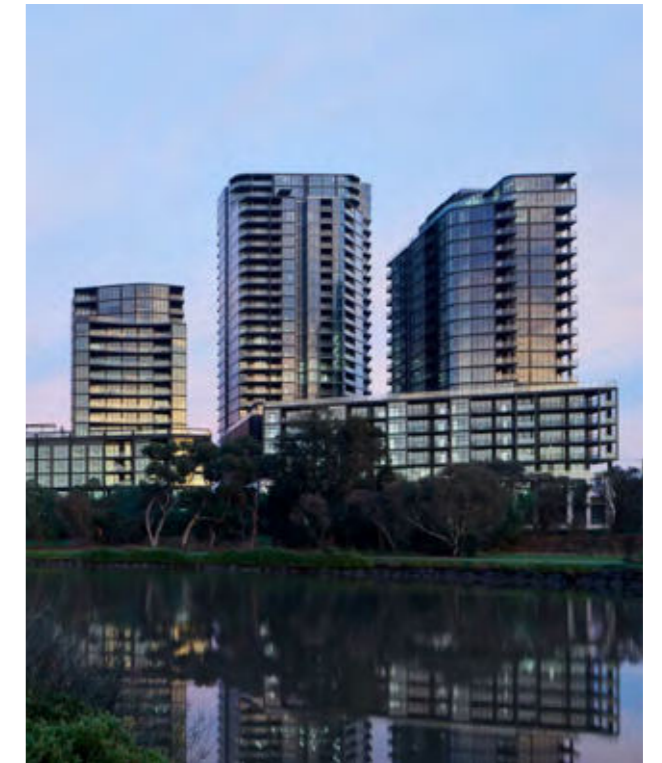
### PROJECT MANAGER

Deloitte has a breadth of experience covering large and small scale projects. Our team is made up of strong individuals that together make an exceptional resource. Our remarkable client base and repeat business pattern are testament to our effective business practice.

## Three Sixty Property

### SALES & MARKETING

Three Sixty Property Group is Australia's largest privately owned residential development sales & marketing agency. Three Sixty° Property Group is a full-service, residential project development sales agency. With over 30 years experience with Australia's largest public and private companies, Three Sixty° is responsible for over 30,000 residential apartment sales to date. Our ability to see projects through from start to finish, providing expert management every step of the way, provides clients with a comprehensive service unmatched in the industry. This can encompass everything from site purchase, product design and development, application of current market research, through to settlement and property management.



# SOLARA



GLEN WAVERLEY RESIDENCES  
251 SPRINGVALE ROAD GLEN WAVERLEY

[SolaraGlenWaverley.com.au](http://SolaraGlenWaverley.com.au)



While all reasonable care has been taken in the preparation of this brochure and the particulars contained herein, it is intended to be a visual aid and does not necessarily depict the finished state of the property or object shown. No liability whatsoever is accepted for any direct or indirect loss or consequential loss or damage arising in any way out of any reliance upon this brochure. Purchasers must rely upon their own enquiries and inspections. Furniture is not included with the property. Dimensions and specifications are subject to change without notice. Illustrations and photographs are for presentation purposes and are to be regarded as indicative or artist impressions only. This brochure does not form part of, and is not, an offer or a contract of sale.

