



Parklife

DOVETON

64-70 BOX STREET, DOVETON





Breathe Deep and Take in the View

*A new home in a booming suburb with acres
of parkland at its doorstep. At Parklife,
the sky's your limit.*

Parklife is a beautiful cluster of townhouses in Doveton on the edge of the Dandenong CBD, one of Melbourne's growing suburban hubs. Just minutes from the local train station by car, bus, or bicycle, and with easy access to major roads, the superb location connects you to city life while keeping you surrounded by open space.

Between you and the town centre, expansive parks meandering alongside Dandenong Creek form a green buffer where you can escape the daily grind and enjoy a stroll, take the dog out for a run, or kick a ball around with the kids.

Parklife is all about room to move and the freedom and opportunity to grow with the local area. Plant the seeds of your future here, and watch them flourish.

64-70 BOX STREET, DOVETON





Artist Impression

Modern homes set in elegantly landscaped surrounds that connect you to the natural world.



01



02



03



04

Room to Run

Parklife and the Doueton neighbourhood are defined by wide open areas beneath expansive blue skies, where you and your imagination can run free.

This bounty of green space puts around 20 parks, reserves, and golf courses in your reach, along with attractions like go-karting, a drive-in cinema, kids' play centres, and a community farm.

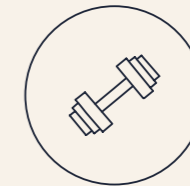
Parklife occupies a prized position among all this, with a swathe of uninterrupted parkland starting 150m from the front drive, within cycling distance of central Dandenong. It's the ideal location for enjoying a lifestyle rich in the pleasures of the outdoors.



THOMAS P. CARROLL RESERVE
150 M AWAY

DANDENONG WORKERS SOCIAL
CLUB AND GOLF COURSE
450 M AWAY

DANDENONG CREEK
550 M AWAY



ICON ARENA INDOOR SPORTS
700 M AWAY

GYM
1.8 KM AWAY



*Bountiful green space puts around 20 parks, reserves,
and golf courses within your reach.*

*Parklife and the Doveton neighbourhood are defined by
wide open areas beneath expansive blue skies, where
you and your imagination can run free.*



Artist Impression

*The tree-lined path to your front door welcomes you
home with softness and sophistication.*

Travel in Your Own Style

Doveton's surrounds are part of an urban renewal area identified by the Melbourne 2030 growth plan, and are well served by transport and other infrastructure that will develop further in the coming decade.

Dandenong Station, which offers a convenient rail connection to the city and intervening suburbs, is only 5 minutes' drive away or a 10 minute cycle through parkland. It's also the interchange point for 26 bus routes linking nearby suburbs, two of which stop less than 100m from Parklife's front gate.

Major roads such as the Monash Freeway, Eastlink, and the Princes Highway also give drivers effortless access to the city, schools, and shopping. The main campus of Monash University, the largest in the state, is just 20 minutes away by car.

From Parklife, you can go anywhere your heart desires, in the style of your choosing.



DANDENONG STATION
2.3 KM AWAY

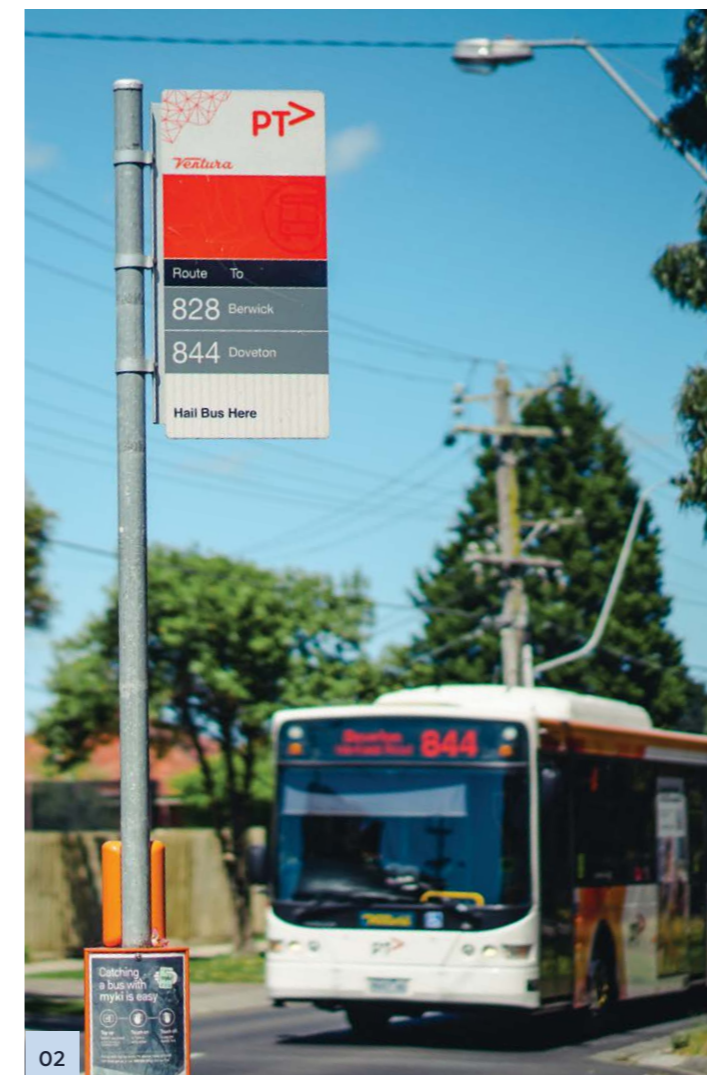


BUS STOPS
< 100 M AWAY

01. Dandenong Station 02. Box Street Bus Interchange 03. Dandenong Station



01



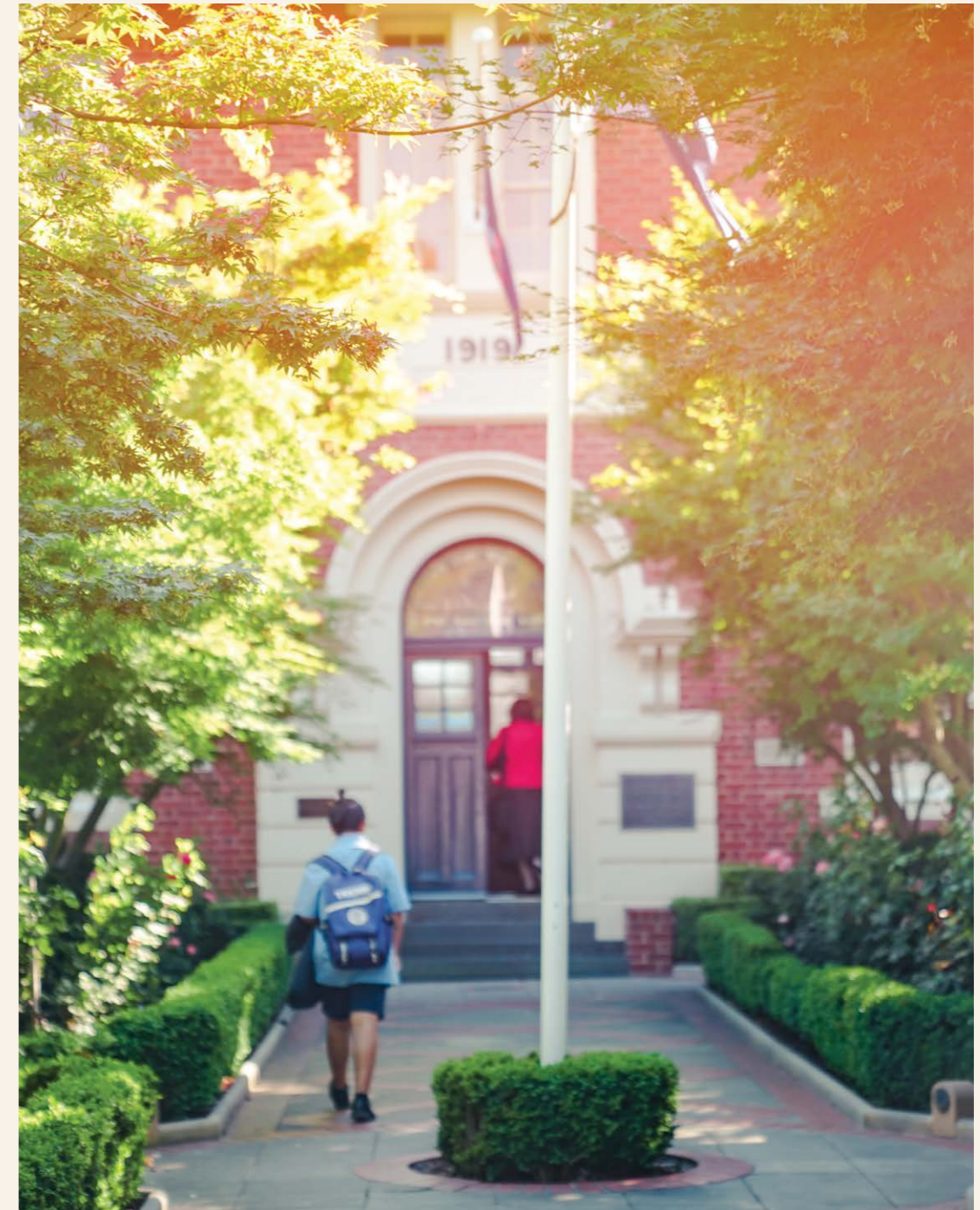
02



03



Doveton, a rapidly developing suburban area favoured by growing families, is surrounded by quality kindergartens and primary schools.



Local secondary schools include St John's Regional College, within walking distance, and the distinguished Dandenong High, founded in 1919.



The spacious homes at Parklife offer ample room to move, effortlessly accommodating your daily life.



01

Keep Your Routine Fresh

One of the major drawcards on Parklife's doorstep is the Dandenong Market. Founded in 1866, it's one of the largest markets in the country, with traders from 150 different nationalities selling fruits and vegetables, meats, cheeses, coffee, clothing and other general merchandise. Whether you're a budding chef, feeding a family, or even looking for a quick meal of some delicious street food, the market is an essential destination for produce that comes fresh from farm to table.

Nearby Dandenong Plaza is also an essential everyday destination, with more than 160 stores including three major supermarkets, while the Autumn Place Community Hub, just a short walk away near the Doveton Library, makes room for a kindergarten and community health facilities. Parklife gives you the utmost convenience, with no need to venture far from home for anything you need.



02



03



04



DANDENONG PLAZA
1.6 KM AWAY



DANDENONG MARKETS
2.3 KM AWAY

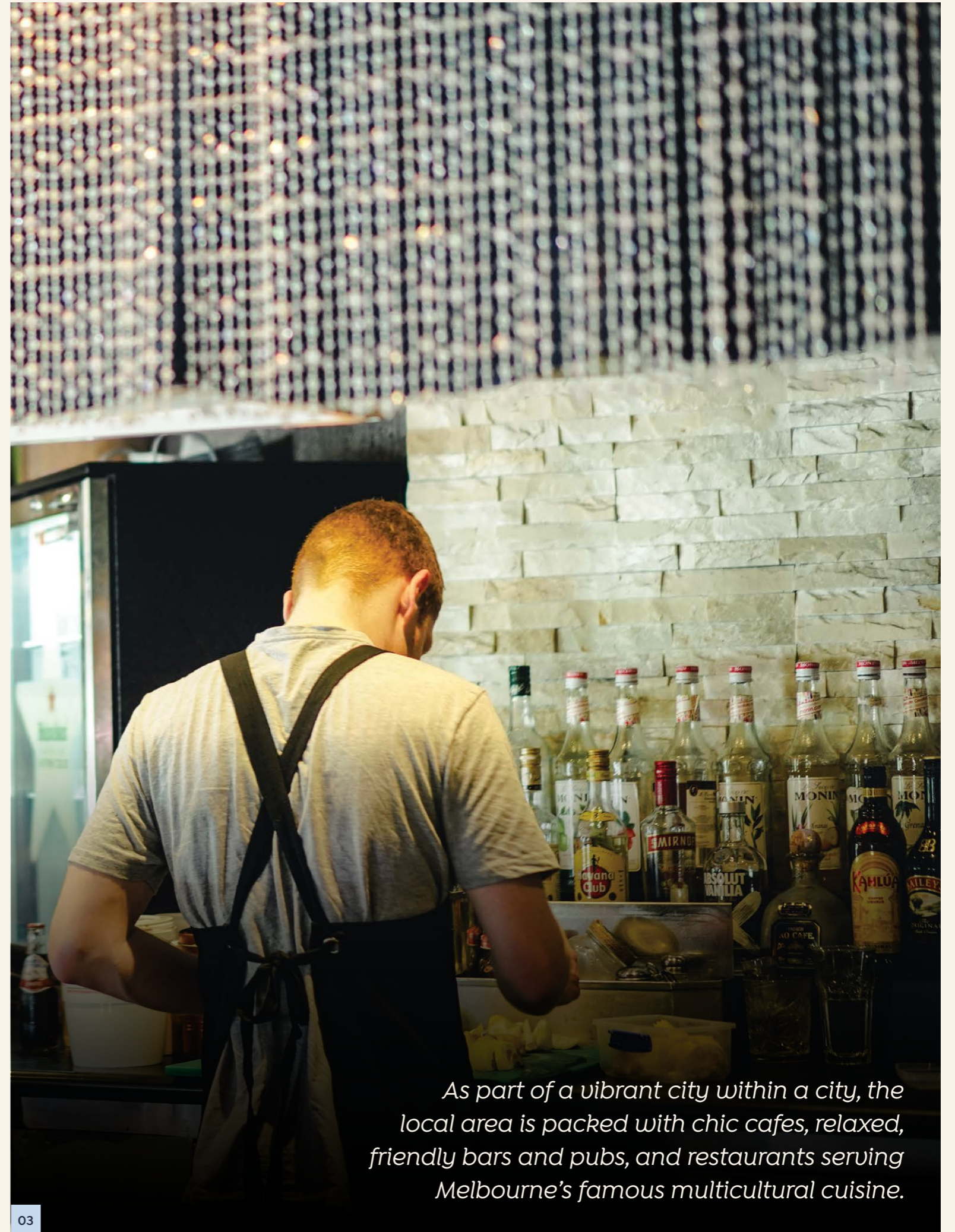
AUTUMN PLACE COMMUNITY HUB
900 M AWAY



01

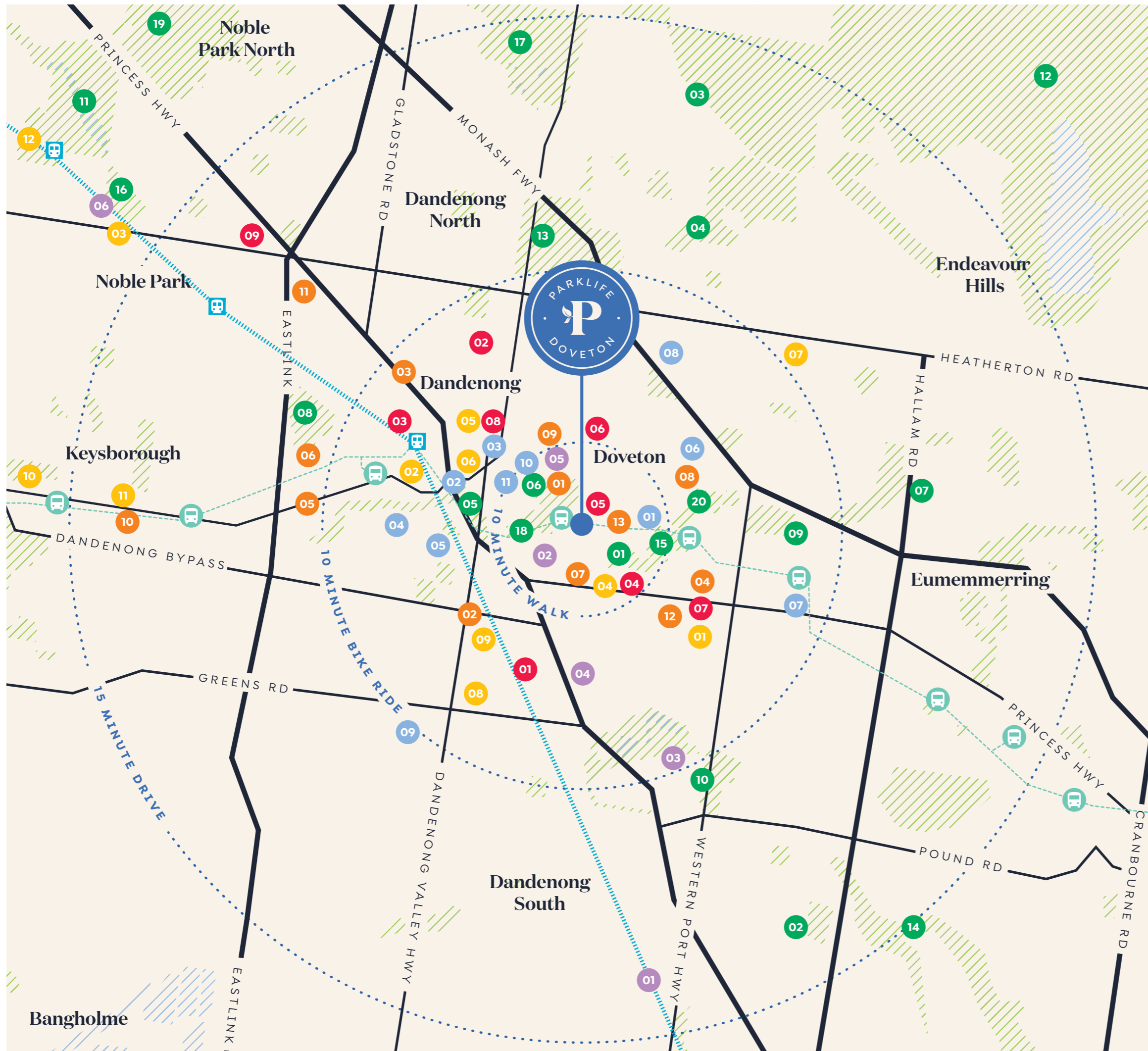


02



As part of a vibrant city within a city, the local area is packed with chic cafes, relaxed, friendly bars and pubs, and restaurants serving Melbourne's famous multicultural cuisine.

03



Parked Amongst it

Parklife is close to the centre of the Dandenong area, a suburban hub in Melbourne's south-east that is packed with parks, attractions, schools, restaurants, shops, and other amenities. Hop in the car or grab a bus or train and explore the myriad delights on offer.

- PARKS**
 - 01. Autumn Place
 - 02. Cairns Road Reserve
 - 03. Churchill National Park
 - 04. Churchill Park Golf Club
 - 05. Dandenong Park
 - 06. Dandenong Workers Social Club and Golf Course
 - 07. Frog Hollow Reserve
 - 08. Greaves Reserve
 - 09. Gunns Road Reserve
 - 10. K.M. Reedy Reserve
 - 11. Ladbroke's Park Sandown Racecourse
 - 12. Lysterfield Park
 - 13. Melbourne Water Recreation Area
 - 14. River Gum Creek Reserve
 - 15. Robinson Reserve
 - 16. Ross Reserve
 - 17. Tirhatuan Wetlands
 - 18. Thomas p Carroll
 - 19. W.N. Sloan Garden Springvale Botanical
 - 20. Waratah South Reserve
- EAT AND DRINK**
 - 01. Broadway Pizza
 - 02. Chipmunks Playland & Cafe Dandenong
 - 03. Dandenong Pavilion
 - 04. Gardenworld
 - 05. Hog's Australia's Steakhouse
 - 06. Just Kebabs
 - 07. McDonald's Dandenong
 - 08. McDonald's Doveton
 - 09. Oz'lankan Cafe
 - 10. Roco Restaurant
 - 11. Shark Fin Inn
 - 12. Spicy Flames
 - 13. Suburban Cafe
- HEALTH**
 - 01. CrossFit Dandenong
 - 02. Dandenong Hospital
 - 03. Doherty's Gym
 - 04. Doveton Boxing Club
 - 05. Doveton Medical Centre
 - 06. Doveton Pharmacy
 - 07. Just Ladies Exclusive Health Club
 - 08. Snap Fitness
 - 09. South Eastern Private Hospital
- PLACES OF INTEREST**
 - 01. Crocs Playcentre
 - 02. Icon Indoor Arena Sports
 - 03. Le Mans Go Karts Melbourne
 - 04. Lunar Drive-in
 - 05. Myuna Farm
 - 06. Noble Park Aquatic Centre
- SHOPS**
 - 01. Bunnings
 - 02. Coles Express
 - 03. Coles Noble Park
 - 04. Dan Murphy's
 - 05. Dandenong Market
 - 06. Dandenong Plaza
 - 07. Endeavour Hills Shopping Centre
 - 08. Harvey Norman
 - 09. Officeworks Dandenong South
 - 10. Officeworks Keysborough
 - 11. Parkmore Shopping Centre
 - 12. Springvale Shopping Centre
- EDUCATION**
 - 01. Autumn Place Kindergarten
 - 02. Dandenong Park Kindergarten
 - 03. Dandenong Primary School
 - 04. Dandenong South Pre-School Centre
 - 05. Dandenong South Primary School
 - 06. Doveton College
 - 07. Hallam Primary School
 - 08. James Cook Primary School
 - 09. Mt Hira College
 - 10. St Mary's Primary School
 - 11. St John's Regional College



Cook and Dine Together

The spacious homes at Parklife offer ample room for a kitchen and dining area that seamlessly integrates multiple aspects of daily life. A colour palette of rich textures and neutral tones, illuminated by sunlight from the outdoors, forms a relaxing backdrop to meals with family and friends, or even a little work or study at the dining table.





Artist Impression

Put Your Feet Up

Lounge areas with abundant space and natural light are the perfect place for a little indoor rest and relaxation. Use the room as a canvas for your creativity, adding personal touches to make it your own special haven. On a rainy day, stay cosy indoors and watch the rain patter on the windows; in sunshine, views of clear skies will beckon you out to play.



Crisp, modern lines and materials create the perfect setting for your morning routine and evening wind-down.

Immaculate and Modern

Bathrooms exemplify the attention to detail that has gone into every aspect of Parklife's design. Beautiful and functional finishes pair with elegant, minimalist joinery to create a serene space where you can begin your day and get ready to take on the world, or jump under the hot water and wash away your cares.

Artist Impression



CANTERBURY RISE



VICTORY



LALOR PARK



NORTH STAR



THE HAVEN



NEUE



64-70 BOX STREET, DOVETON

While all reasonable care has been taken in the preparation of this brochure and the particulars contained herein, it is intended to be a visual aid and does not necessarily depict the finished state of the property or object shown. No liability is accepted for any direct or indirect consequential loss or damage arising out of any reliance upon this brochure. Purchasers must rely upon their own enquiries and inspections. Furniture is not included with the property. Dimensions and specifications are subject to change without notice. Illustrations and photographs are for presentation purposes and are to be regarded as indicative only. This brochure does not form part or all of an offer or a contract of sale. Design by Qualia Creative (qualiacreative.com.au).



GOLDFIELD GROUP™

DEVELOPER

Goldfield Group directors have more than a decade of experience in residential property development. Our goal is simple: put the warm heart back into brand new residential living.

We are committed to designing and developing first-class living environments. Our clients can count on comfort, security and affordability. Goldfield Group projects are distinguished by meticulous planning and execution.





Start Living the Parklife

REGISTER YOUR INTEREST TODAY
www.parklife.com.au

