

# HOUSE & LAND PACKAGE

 **LIMITED OFFER**



CLOVERTON ESTATE - LOT 60421 KALKALLO VIC 3064  
HIGHETT 16 *ELEVATE FACADE*

## COMPLETE FIXED PRICE \$608,300

### PREMIUM PACKAGE INCLUSIONS

- LAND DIMENSIONS: 12.50M (W) x 21.0M (L)
- LAND SIZE:: 263M2
- BLOCK TYPE: REGULAR
- HOME SIZE::144.95 M2 / 16SQ
- TITLED/ESTIMATED TITLE DATE: Q2 2026

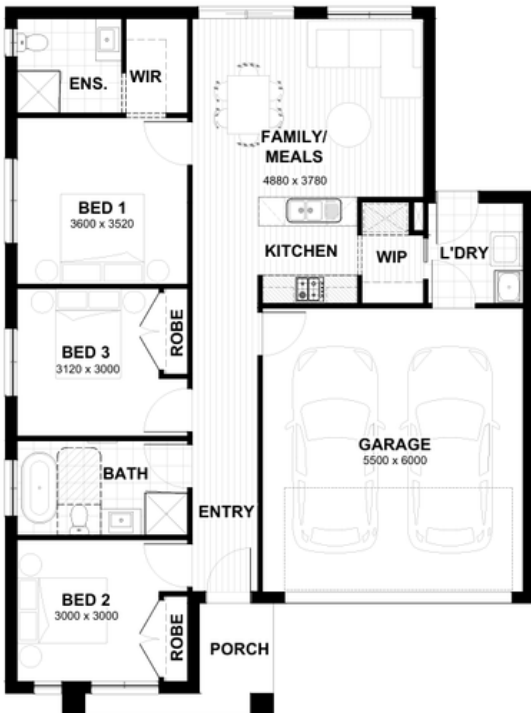
- LAND CONTRACT: \$304,000
- BUILD CONTRACT: \$296,600
- ESTATE GUIDELINES: \$7,700

- Premium 2590mm ceiling height through out
- Stoneart 20mm stone bench tops to kitchen, ensuite, bathroom and laundry
- Sleek waterfall end to Kitchen Island Bench
- Technika In-Built Oven, Cooktop & Canopy Rangehood
- Technika Stainless Steel Dishwasher to Kitchen
- Premium upgrade Timber 12MM Laminate Flooring to ALL Living Areas 22oz underlay
- Carpet to all bedrooms
- Designer Free-Standing Bath
- Slimline Light and Power Point Switches LED Down lights
- Braemar Ducted Heating
- Watty! Three Coat Paint System TO ALL LIVING AREAS
- Fibre Optic Ready - NBN network
- 10-Year Structural Warranty

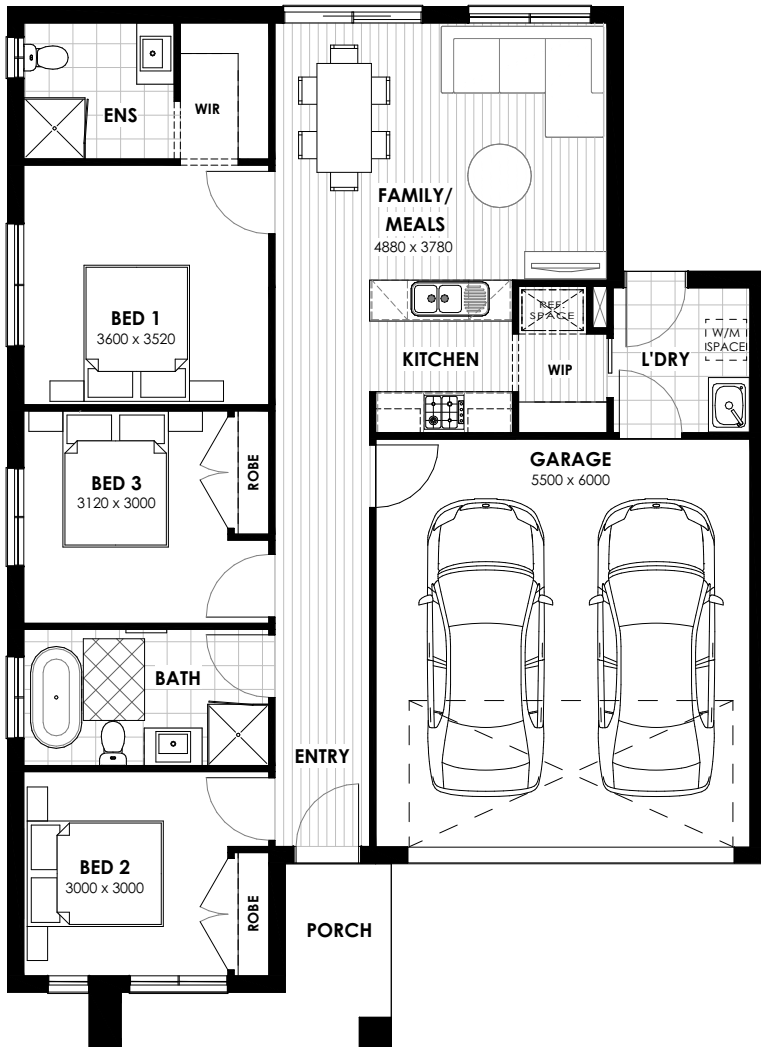


### COMPLETE TURNKEY UPGRADES

- Fixed Site Costs including H-Class Slab & Piers
- Peace of Mind Rock Extraction & Removal Guarantee
- Front, Side & Rear Landscaping - see Landscape Plan
- Concrete Driveway & Porch (Colour Through)
- Full Fencing, Clothesline, Letterbox & TV Antenna
- 7-Star Energy & NCC Compliant
- Developer Guidelines INCL Eaves, Water Tank, Recycled Water & Corner Treatment (where required)
- Community Infrastructure Levy (CIL)
- BAL12.5 Bushfire Compliant (where applicable)
- Split System Air Conditioner to Living Room
- Window furnishings - Blinds & Fly-screens to ALL Windows
- Brick Infills above all Windows & Garage Door



QUALITY SUPPLIER PARTNERS INCLUDING BUNNINGS, BEAUMONT TILES, PGH BRICKS, CSR, BARRO CONCRETE, COLORBOND, BOWENS, R+R CABINETS, STONEART, MIXX TAPWARE, SOUTHERN STAR WINDOWS, JAMES HARDIE, TIMBERTRUSS, ALLZONE ROOFING, CHROMAGEN, HUME DOORS, BRAEMAR, ONSITE GROUP, HALL BUILDERS MARKET, DYNAMIC DOOR SERVICES, SOILWORX, H&H, BINGO INDUSTRIES, D&G ROOFING, BESTON PLUMBING, CELIKTRICAL, ANCORP CIVIL, PRIME SURVEY, BTPA, HIRE4YOU, INTRAX CONSULTING ENGINEERS, WATTYLY, DECK GUARDRAIL, MKR, SPEC AIR, JLB FENCING, VOGUE LANDSCAPING, MASTER PLASTER, TECHNIKA, AGL ENERGY and more....



# HIGETT 16

3 | 2 | 1 | 2

Minimum Lot Width: 12.50m  
 Minimum Lot Depth: 21.00m  
 (EAST & WEST)  
 Home Width: 11.15m  
 Home length: 15.32m

## AREA SUMMARY (m2)

FLOOR AREA	m2
GROUND FLOOR	104.14
GARAGE	35.82
PORCH	6.67
TOTAL BUILDING AREA	146.63 m <sup>2</sup>

NOTE: NORTH AND SOUTH FACING LOTS WILL REQUIRE AN ADDITIONAL 2M IN LOT LENGTH



# EVO HOMES

VICTORIA

**COPYRIGHT:** This document and its contents are the exclusive property of EVO Homes Victoria. No part of this work may be reproduced, copied, or transmitted in any form or by any means without written permission from EVO Homes Victoria. Dimensions may vary slightly depending on the selected façade and floorplan. Minimum lot sizes are subject to Council requirements and Estate Guidelines. This document is for illustrative purposes only and should be used as a general guide. Illustrations are not to scale. All room dimensions are internal measurements taken to the framework. Refer to the final working drawings for accurate details. Furniture shown is for presentation purposes only and not included.

# QUALITY INCLUSIONS

## CEILING

---

2590mm Ceiling Height throughout to interior of the home

## KITCHEN APPLIANCES

---

### Oven

Stainless steel 600mm fan forced oven.

### Rangehood

Stainless steel 600mm wide canopy rangehood.

### Sink

Stainless steel double bowl sink.

### Cooktop

Stainless steel 600mm gas cooktop with wok burner.

### Dishwasher

Stainless Steel 600mm Dishwasher

## KITCHEN

---

### Cabinets

Soft Close Fully lined melamine modular cabinets including overhead cupboards as per plan (including above Refrigerator Space)

### Microwave Provision

Standard laminate including single power point and pot drawers below (plan specific)

### Handles

Selected from builder's quality colour boards.

### Taps

Designer Chrome Gooseneck mixer tapware.

### Splashback

Tiled Splashback as per plan – 75mm x 300mm

### Hamper (Bulkhead)

Hamper above Walk-in-Pantry entry

### Pantry

4 x white melamine shelves.

### Fridge Provision

Laminate or plastered including single power point (plan specific).

### Doors/Drawers

Laminate from builder's quality colour boards.

### Kitchen Bench Top

20mm Stone Benchtops

### Waterfall End

20mm Stone Waterfall End (1 x) to Kitchen Benchtop (plan specific)



## BATHROOM CABINETRY

---

### Cabinets

Soft Close Fully lined melamine modular cabinets as per plan.

### Vanity Bench Top

20mm Stone Benchtops

### Doors/Drawers

Soft Close Laminate from builder's quality colour boards.

### Handles

Selected from builder's quality colour boards.

## BATHROOM & ENSUITE

---

### Basins

Vitreous china vanity basin (white).

### Mirrors

1150mm high polished edge mirror to full width of vanity.

### Shower Screens

Semi framed 2000mm shower screens with powder coated aluminium frame (polished silver finish) and clear glazed pivot door.

### Shower Bases

Recessed Tiled shower bases with waterproof system throughout.

### Shower Outlet

Handheld shower, rail and slider in chrome finish to ensuite and bathroom.

### Hamper (Bulkhead)

Hamper above Ensuities & Walk-in-Robes entries



### Bath

1500mm freestanding bath (plan specific)

### Accessories

600mm single towel rail and toilet roll holder in chrome finish.

### Taps

Chrome mixer tapware.

### Exhaust Fans

250mm exhaust fans including self sealing air flow draft stoppers.

### Toilet Suite

Vitreous china, close coupled toilet suite with soft close top.

### Privacy Locks

Privacy Locks to all Bathrooms & WCs

## LAUNDRY

---

### Cabinet

700mm laundry cabinet with 20mm Stone Benchtop from builder's quality colour boards, with 45 Litres Stainless Steel trough.

### Washing Machine Provision

Washing machine provision under Laundry Laminated Benchtop with chrome washing machine stops and powerpoint

### Tap

Flickmaster tap, chrome finish.



## STORAGE

---

### Robe Shelving

1 x white melamine shelf with hanging rail.

### Broom & Linen Shelving

1 x white melamine shelf with 2040mm high hinged door.

### Robe Doors

2040mm high sliding doors as per plan.

### Walk-In Robe (design specific)

1 x white melamine shelf with hanging rail.

### Handles

Handles in polished chrome finish.

### Linen

2040mm high hinged door(s) as per plan where space permits. Four white melamine shelves.

## CERAMIC TILING

---

### Wall Tiles

Wall tiles to kitchen, bathroom, ensuite and laundry where shown on plans. Tile selection as per builder's quality colour boards.

### Floor Tiles

Floor tiles to ensuite, bathroom, laundry and WC. selection as per builder's quality colour boards.

### Skirting Tiles

Skirting Tiles to Bathroom, Ensuite, Laundry & WC

### Feature Tiles

Feature 100mm x 300mm splashback wall tiles to kitchen, bathroom, ensuite and laundry where shown on plans. Tile selection as per builder's quality colour boards.



## FLOOR COVERINGS

---

### Carpet

Quality Carpet 22/OZ with Sprintread Ultimate 10mm underlay to all Bedrooms, Lounges & Study. Selections as per builder's quality colour boards and as shown on plan.

### Carpet (double storey)

Quality Carpet 22/OZ with Sprintread Ultimate 10mm underlay to all upper floor areas including stairs (excluding wet areas). Selections as per builders quality colour boards and as shown on plan.

### Laminate Flooring

Quality Laminate 12mm flooring to Entry, Kitchen, Meals, Family Areas and Passageways as shown on plan. Selection as per builder's quality colour boards.

## INTERNAL FEATURES

---

### Doors

2040mm high hinged or sliding doors as per plan.

### Door Stops

White door stops to hinged doors, where applicable.

### Mouldings

67mm x 18mm Beveled MDF skirting & 42mm x 18mm MDF beveled architraves.

### Door Furniture

Lever door furniture in polished chrome finish to all rooms.

### Door Seals

Door seals to nominated internal doors.

*Note: This will be in accordance with energy rating report.*

## PLASTERWORK

---

10mm plasterboard to ceiling and wall, water resistant plaster to ensuite, bathroom, above laundry benchtop, 75mm cove cornice throughout.

## PAINT – 3 COAT APPLICATION TO ALL OPEN AREAS

---

### Timberwork

Semi-Gloss enamel paint to internal doors, jambs & mouldings.

### Internal Walls

Washable low sheen acrylic paint to internal walls.

### Entry Door

Semi-Gloss enamel paint to front entry door.

### Ceilings

Flat acrylic paint to ceilings.

### Colours

Paint colours selected as per builder's quality colour boards.

## STAIRCASE (DOUBLE STOREY HOMES)

---

Pine closed stringers, with MDF treads and risers with carpet cover. Feature Pine Handrail above plastered Dwarf Wall balustrade.

## INSULATION

---

### External Brickwork

Glasswool wall batts including sisalation to external brick veneer walls (excluding garage) and wall between garage and house as required to meet 7 star energy rating.

### Ceiling

Ceiling insulation as required to meet 7 Star energy rating.

Note: Excludes double glazed, low E glazed, insulation batts between floor joists on Double Storey designs.

## ELECTRICAL

---

### Internal Light Points

100mm diameter 240V LED downlights fittings (colour – white) throughout as per floorplan specific electrical layout (supply/install light globes to all light fittings in the home).

### External Lights

100mm diameter fixed 240V white recessed downlight to front entry and alfresco where applicable. Weather proof Para flood light to front of garage (1 x) and to rear (1 x) as per electrical plan.

### Power Point

Double power points to all Bedrooms and Living areas. Single power points to dishwasher, microwave and refrigerator locations (refer to electrical plan).

### TV Points

2 x TV points (1 x to Master Bedroom and 1 x to living area).

### Data Points

2 x Data Points (as per plan)

### NBN / Fibre Optics

NBN provision infrastructure on garage wall

### Telephone Point

2 x pre-wired telephone points to kitchen & Master Bedroom with wall plate as per plan

### Switch Plates

White wall mounted switches.

### Smoke Detector(s)

Hardwired Smoke Detectors with battery backup as per plan

### Safety Switches

RCD safety switch and circuit breaker switches to meter box.

## HEATING

---

Gas ducted heating to all bedrooms and living areas. Total number of points and unit size are product specific.

## FRAMING

---

Engineered pine wall frame and roof trusses.

## GARAGE

---

### General

Garage with concrete tiled roof including Colorbond® sectional overhead door, plaster ceiling and concrete floor.

### Infill Over Garage Door

Brick infill over sectional garage door

### Remote Controls

2 x handheld remote controls & wall mount

### External Door to Rear

Weatherproof flush panel door, low sheen acrylic paint finish (design specific).

### External Walls

Brick veneer (on boundary wall or product specific if required).

### External Door Frame

Aluminium powder coat finish.



### External Door Furniture

Entrance lockset.

### Internal Access Door to Home from Garage

2040mm x 920mm high hinged step-free door, low sheen acrylic paint finish. (design specific).

## SOLAR PANELS

---

3.5kW Solar Panel system to achieve 7-Star Energy rating.

## PLUMBING

---

2 x External Taps – 1 x external tap to front water meter and 1 x external tap next to laundry exit.

## HOT WATER SYSTEM (ESTATE SPECIFIC)

---

### Heat Pump System

Air-water heat pump system with 170 litre storage tank, and continuous mains pressure 20 litre gas booster.

### Or Gas Continuous Flow System

Gas continuous flow water heater system (up to 27 sq.'s = 20 L/M Unit & 28 sq.'s and above = 26 L/M unit).

*Note: Continuous flow water heater will be used in estates where recycled water or water tank is available. In lieu of heat pump system.*

## 7 STAR ENERGY

---

Minimum 7 star energy rating for house plans and all facades on any orientation.

## EXTERNAL FEATURES

---

### Bricks

PGH Brick selection from builders' quality colour boards to single storey homes and ground floor of double storey homes.

### Light Weight Cladding

Rendered lightweight finish to first floor of double storey homes. Finish and colour to be selected from builder's quality colour boards (design specific – refer to working drawings for extent of cover).

### Front Elevations

As per Working Drawings. Acrylic render to selected areas as per plan.

### Eaves

450mm Eaves to Front Facade with up to 3m return (where required by Estate Guidelines)

### Hebel Product

Rendered Hebel panels to facades (where required). Finish and colour to be selected from builder's quality colour boards (design specific – refer to working drawings for extent of cover).

### Mortar Joints

Face Brickwork – Natural colour rolled joints.

### Balcony Balustrade

Facade specific. (Double Storey plans only)

### Balcony Flooring

Builders range external ceramic tile.

## WINDOWS

---



### Single Storey Windows

Aluminium awning windows to Front Facade. Aluminium sliding windows to all other openable windows. Double glazed windows to front facade where required to meet 7 star energy rating. Key lock to all openable windows

### Infill Over Windows

Brick infill over all windows

### Double Storey Windows

Aluminium awning windows to Front Facade. Aluminium sliding windows to all other openable windows. Double glazed windows to front facade where required to meet 7 star energy rating. Key lock to all openable windows

## EXTERNAL DOORS

---

### Front Entry Door

Feature front door as per facade with clear glass.

### Front Entry Door Furniture

Entrance lockset in polished stainless steel with deadbolt (product specific).

### Door Seal

Door seal and weather seal to all external hinged doors.

### Infill Over Doors

Brick infill over all external doors

### Entry Frame

Aluminium, powder coated finish (product specific).

### External Hinged Door

Entrance lockset in polished stainless steel to external door of garage (plan specific)

### External Family & Laundry Door

Aluminium powder coated sliding door (as per plan)

## ROOFING

---

### Pitch

Roof pitch to be 22.5 degrees.

### Fascia & Guttering

Colorbond® fascia, guttering and downpipes.

### Material

Concrete roof tiles from builder's quality colour boards to meet 7 star energy rating.

## SITE CONDITIONS / FOUNDATION

---

### Foundation Class

Engineer-designed Up to Class H2 pierced concrete slab a maximum of 500mm fall over allotment and up to 200mm of fill. If fill is shown on block, a lot-specific Level 1 Compaction Report is required, or additional charges may apply. Land allotments up to 450m<sup>2</sup>.

### Silt Fence

Supply and hire of environmental silt fence to front of property as required by council.

### Temporary Fencing

Supply and hire of temporary fencing to site as required.

### Rock Extraction & Removal

Rock Extraction and Removal (fully guaranteed). Refer to special conditions of building contract

### Termite Treatment

Termite spray system as required by the relevant authority.

## PRELIMINARY WORKS

---

### Pre-site Inspection

A pre-site inspection will be conducted

### Soil Report & Contour Survey

From our independent Geotechnical Engineers

### Developer Approval

Developer Approval applications (where required)

### Building Permit

Building Permit and associated application fees

### BAL 12.5 (Bushfire Attack Level)

Provided FREE if required

## CONNECTION OF SERVICES

---

### Electricity

Single Phase underground electricity

### Water Mains & Gas Supply

To be provided

### Sewer & Stormwater Connection

To be provided

### Dry Tapping Water Connection

Recycled Water provided FREE if required

### Water Tank

Water Tank provided FREE if required

### NBN / Fibre Optics

The home is to be provided NBN ready

*Note: All connection points to be within the boundary of the home. Telephone and electricity consumer account opening fees not included.*

## COMPREHENSIVE WARRANTY PROTECTION

---

Includes a 10-Year Structural Warranty for peace of mind, plus a 3-Month Maintenance Period to address any minor issues after handover.

## PRICE LOCK PERIOD

---

12-Month Price Hold from the date of initial deposit — protecting you from market volatility during the planning process.

# TURNKEY PACKAGE

Transform your new home into a stylish and comfortable haven with our turnkey package – expertly crafted upgrades that deliver the ideal balance of form and function from day one.



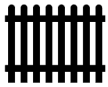
## Front Landscaping

A welcoming front garden featuring premium instant turf, low-maintenance mulched garden beds, decorative pebbles and rocks, and a standout 1200mm feature tree. Includes a fully prepared nature strip with topsoil and seeded lawn for a lush, finished look.



## Side & Rear Landscaping

A private outdoor sanctuary with up to 50m<sup>2</sup> of lush instant turf, mulched garden beds, and low-maintenance topping across remaining areas. Fitted with an efficient dripper system—ready for relaxation or entertaining.



## Fencing & Gates

Full perimeter fencing (1800mm high) to side and rear boundaries for privacy and peace of mind. Includes a wing fence and 900mm side gate for easy access—constructed in timber paling or Colorbond to developer standards.



## Colour In Concrete Paving

Concrete paving to your driveway, front path and porch—durable, practical, and tailored to complement your façade's colour palette.



## Brick Infills

Brick infills above all windows and external doors, including the garage front, for a seamless and cohesive facade finish.



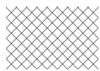
## Letterbox

Stylish pillar-style concrete letterbox, designed to complement the overall aesthetic of your front garden. Durable, modern, and colour-matched for a cohesive streetscape finish.



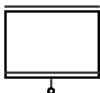
## Clothesline

Space-saving fold-down clothesline, wall-mounted and colour-matched to complement your home's external finishes. Practical, durable, and neatly designed to blend in.



## Flyscreens

Keep your home breezy and bug-free with high-quality flyscreens fitted to all openable windows and sliding doors. Designed for durability and airflow, they offer year-round comfort without compromising on style or security.



## Roller Blinds

Stylish Vibe Block Out blinds fitted to up to 15 windows and 2 sliding doors, ensuring privacy and energy efficiency throughout your home.



## Split System Airconditioning

Stay cool in summer with a powerful 5kW split system air conditioner, featuring a wall-mounted unit, condenser, and isolation switch for safety and comfort.



## TV Antenna

Enjoy seamless entertainment with a fully installed TV antenna, connected directly to all designated TV points in your home.

# INCLUDED FACADES

---



## ELITE

The Elite facade blends clean lines with timeless sophistication. With its striking gable roof, natural textures, and understated palette, Aspen offers strong street presence while maintaining a relaxed, contemporary feel.

---

## PAVILLION

Inspired by open, airy architecture, the Pavillion facade combines bold horizontal lines with subtle layering. Its minimalist design and modern materials create a sense of lightness and space — perfect for a fresh, coastal or urban look.



## ELEVATE

Elevate makes a confident statement with its bold angles and elevated finishes. Featuring strong vertical elements and a sleek, modern aesthetic, this facade is ideal for those wanting a premium, architectural feel from the street.

---

## BRIGHT

The Bright facade lives up to its name — clean, fresh, and full of natural charm. With its inviting tones and simple symmetry, Bright offers a timeless design that suits both growing families and first-home buyers alike.



# EXTERNAL COLOURS

## SILVER MIST

Tick box to select



Brick & Infills  
Putty



Roof Tiles  
Atura in Barramundi

Entry Door  
Woodland Grey

Render 1  
Surfmist

Render 2  
Shale Grey

Driveway  
Charcoal

Windows  
Woodland Grey

Garage Door  
Woodland Grey

Gutter, Fascia & Pipes  
Woodland Grey

## UMBER

Tick box to select



Brick & Infills  
Red Rock



Roof Tiles  
Atura in Barramundi

Entry Door  
Surfmist

Render 1  
Surfmist

Render 2  
Evening Haze

Driveway  
Charcoal

Windows  
Monument

Garage Door  
Surfmist

Gutter Fascia & Pipes  
Monument

All images are for illustrative purposes only. Colour and shades of product may vary due to print and this document should be used as an example only.

# EXTERNAL COLOURS

## GUN METAL

Tick box to select



**Brick & Infills**  
Grey Nuance



**Roof Tiles**  
Atura in Barramundi



**Entry Door**  
Woodland Grey



**Render 1**  
Shale Grey



**Render 2**  
Woodland Grey



**Driveway**  
Charcoal



**Windows**  
Woodland Grey



**Garage Door**  
Woodland Grey



**Gutter, Fascia & Pipes**  
Woodland Grey

## COASTAL

Tick box to select



**Brick & Infills**  
Straw



**Roof Tiles**  
Colorbond Surfemist



**Entry Door**  
Surfemist



**Render 1**  
Woodland Grey



**Render 2**  
Surfemist



**Driveway**  
Charcoal



**Windows**  
Surfemist



**Garage Door**  
Surfemist



**Gutter Fascia & Pipes**  
Surfemist

All images are for illustrative purposes only. Colour and shades of product may vary due to print and this document should be used as an example only.

# INTERNAL COLOURS

## TAUPE

Tick box to select



## DRIFTWOOD

Tick box to select



All images are for illustrative purposes only. Colour and shades of product may vary due to print and this document should be used as an example only.

# INTERNAL COLOURS

## ASH STONE

Tick box to select



## OAK

Tick box to select



All images are for illustrative purposes only. Colour and shades of product may vary due to print and this document should be used as an example only.

# QUALITY SUPPLIERS



We're proud to work alongside some of Australia's most trusted and recognised brands to deliver high-quality homes for our clients.

